



Door Lock's **PUSH PULL**

Push Pull's **SAMSUNG**

**PUSH**  
Outside

**PULL**  
Inside



SHS-P718

New Concept in Door Locks

# PUSH PULL SERIES



## Easy Way to Open Door

- Easy access using push-pull handle
- Biometric access system



## Secured Lock-up

- Robust structural-design
- Anti-hacking encryption protocol



## Smart Functions

- Automatic wake-up on approaching
- Locking notification on touch panel



## Innovative Technology

- 14 patents pending
- Unprecedented design with modern style

Family Product



RF Card Type (SHS-P717)

# Door Lock's **PUSH PULL**

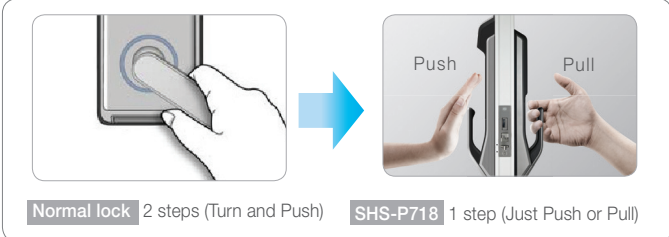
# Push Pull's **SAMSUNG**



## Easy way to open the door

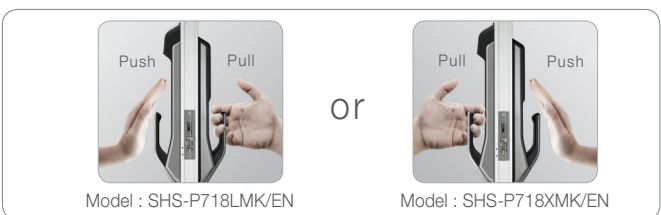
### Just one step to open!

A new concept of push and pull design makes it convenient to use. Easy single-motion to open door. (Push a handle from the outside and pull it from the inside of the house.)



### Available in both a push-pull or a pull-push

Depending on the direction of the door installed in the residence, customer can choose from either push-pull type or pull-push type on purchase.

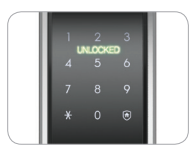


## Smart Functions



### Automatic wake-up on approaching

IR sensor detects motion within 70 cm and wakes up the lock automatically



### Locking notification on touch panel

It notifies the status of the door on touch panel ('Locked', 'Unlocked', etc.)



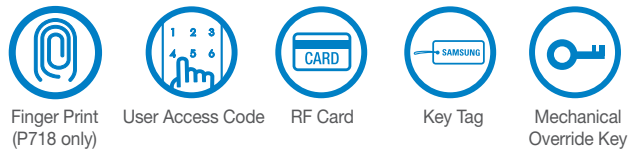
### Manner Mode

It allows you to make a quiet entrance at late night. (Push \* button and user access codes)



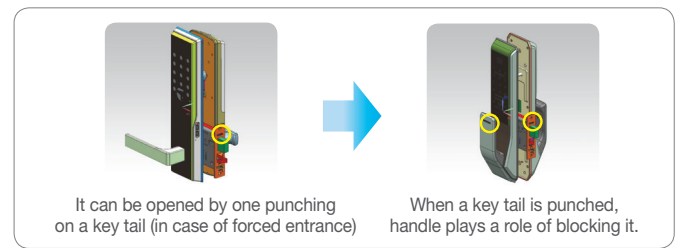
## Secured Lock-up!

### Various ways to open a door make for easy and safe entrance



### Safe and robust design

Integrated structure of handle and main body that prevents from forced entrance



## Technology and Design



### 14 patents pending (push-pull)

3 international patents

### Two-way latch mortise Soft feeling while door open

Verified by self-test of 300,000 runs



### Superior design that has won 3 major design awards

Samsung Smart Door Lock products won 3 major design awards (German IF, Red Dot Design Award and US IDEA Design Award).

### • Specification

<b>User access code</b>	4~12 digit number combination , capacity : 10	
<b>RF ID</b>	ISO 14443A type(13.56MHz), capacity : 20	
<b>Finger print (P718 only)</b>	Method	Optical
	Verification time	Less than 1 second
	Capacity	100fingerprints(max.)
<b>Size (WxHxD)</b>	Outer body : 85x387x61mm(P718) 85x346.5x61mm(P717)	
	Inner body : 86x354.8x63mm	
<b>Door thickness</b>	38~80mm	
<b>Power</b>	DC 6V (AA Alkaline Batteries)X8	
<b>Battery Life</b>	Approximately 12 months (Average – 10 times per day)	

## Network Specialist **SAMSUNG SNS**

www.samsungsns.com  
sales.smarthome@samsung.com